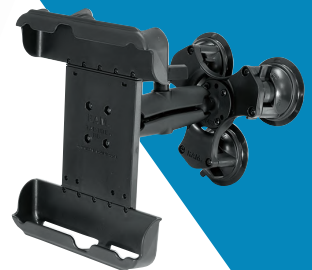


# GNSS ACCESSORY

# 5



- Carbon Fiber Pole **P.086**
- Bipod / Pole Accessory **P.087**
- Clamp Holder for Device **P.088**
- GNSS Receiver Case / Tribach / Adapter **P.092**
- GNSS Pole **P.094**



TRIPOD	1
PRISM	2
POLE	3
STAFF	4
GNSS ACCESSORY	5
LASER SCANNING	6
SURVEYING / LASER INSTRUMENT	7
SURVEYING ACCESSORY	8
MEASURING TOOL	9
TESTING INSTRUMENT	10

## The commonly used accessories for GNSS survey

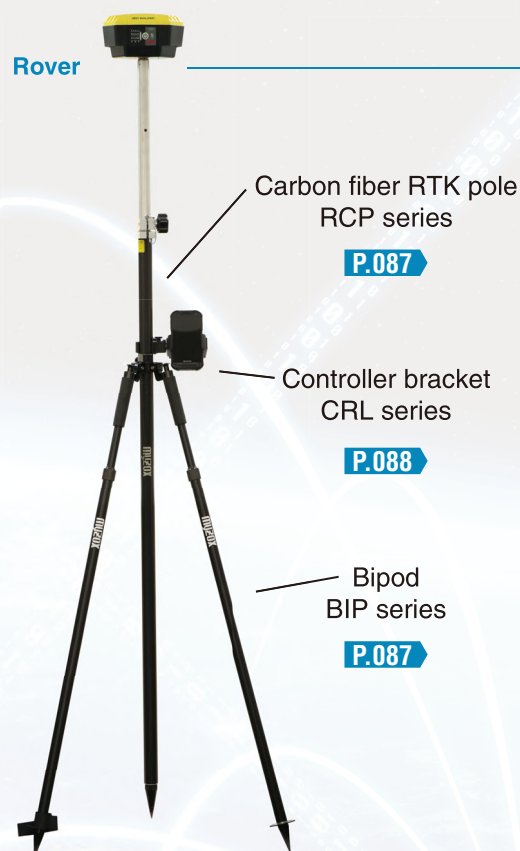
Introducing our comprehensive range of GNSS accessories designed to enhance your surveying experience. From sturdy surveying poles to convenient device holders, we offer high-quality products to support your GNSS surveying needs. Whether you're conducting land surveys, construction projects, or mapping tasks, our reliable and durable accessories ensure secure mounting, precise positioning, and easy data collection.

### Combination Examples

Base



Rover



### Combination of RTK Pole and Bipod



#### Mismatch

If you use BIP-180 and RCP-200 together, pole clamp part of BIP-180 will be just on the locking part of RCP-200.



2.0m pole  
RCP-200  
+  
Bipod 180cm  
BIP-180



#### Compact



2.0m pole  
RCP-200  
+  
Bipod 148cm  
BIP-148

#### Standard



2.6m pole  
RCP-260  
+  
Bipod 180cm  
BIP-180



# Clamp Holder for Device Compatibility Chart

## Panasonic **TOUGHBOOK**

Device	Mounting location				Model	Page
	Pole	DM Pin Pole	Construction machinery	Wearable		
FZ-N1	○	○ <sup>*1</sup>			TAB-N1S	<a href="#">P.089</a>
				○	TF-N1	<a href="#">P.090</a>
FZ-S1 FZ-M1	○				TAB-7	<a href="#">P.091</a>
FZ-A3 FZ-G1 FZ-G2	○		○ <sup>*2</sup>		TAB-C10	<a href="#">P.091</a>
			○		TS-C10	<a href="#">P.091</a>

## Smartphone

Device	Mounting location				Model	Page
	Pole	DM Pin Pole	Construction machinery	Wearable		
Width : max. 78mm Height : 125 ~ 174mm	○	○ <sup>*1</sup>			TG-SH1	<a href="#">P.089</a>
				○	TF-SH1	<a href="#">P.090</a>
Width : 58 ~ 85mm		○ <sup>*3</sup>			DM-SH6	<a href="#">P.089</a>
Width : 45 ~ 114mm	○	○ <sup>*1</sup>			X-GSM	<a href="#">P.089</a>

## Tablet / Data Collector

Device	Mounting location				Model	Page
	Pole	DM Pin Pole	Construction machinery	Wearable		
7 inch tablet 8 inch tablet	○				CRL-TP1	<a href="#">P.088</a>
	○				TAB-7	<a href="#">P.091</a>
10 inch tablet	○		○ <sup>*2</sup>		TAB-C10	<a href="#">P.091</a>
Data collector Width : 67 ~ 110mm	○	○ <sup>*1</sup>			CRL-CLM1	<a href="#">P.088</a>
Data collector TOPCON : FC-500/600 SOKKIA : SHC500/600				○	TF-C56	<a href="#">P.090</a>

\*1 Requires adapter COV9 or Sliding Grip TAKT series. (p.088)

\*2 Applicable only to construction equipment cockpits with cylindrical mounting locations such as handrails.  
(Please refer to the product page for compatible cylinder diameters)

\*3 DM pin pole 6mmφ only.

### **OEM/ODM service available for your tablet controller**

Feel free to reach out to us for customization and we will create a clamp holder that perfectly fits your requirements.



## Carbon Fiber RTK Pole -Telescopic type- RCP series

### RTK SURVEY

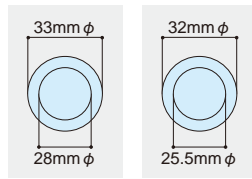
Choice of 2,600mm and 2,000mm.



RCP-260



RCP-200



RCP-260 RCP-200  
Pole diameter



RCP-260 RCP-200  
Built-in circular level  
(20' / 2mm)



Screw locking



Pin for anti-drop

### ✓ CHECK

#### SUITABLE FOR RTK SURVEY

Durable body with an extra thickness to carbon-fiber material. The shoe is made of stainless and it is resistant to corrosion.



Pole wall thickness  
2mm



Corrosion-resistant shoe  
stainless made

#### ► SPECIFICATIONS

Model	RCP-260	RCP-200
Full extended	2,600mm	2,000mm
Full closed	1,480mm	1,130mm
Screw	5/8 inch male	5/8 inch male
Weight	1.20kg	1.10kg
Graduation	Metric (5mm)	Metric (5mm)
Material	Carbon Fiber	Carbon Fiber
2nd section	Aluminium	Aluminium



Product Link  
RCP-260



Product Link  
RCP-200

#### ► STANDARD ACCESSORIES

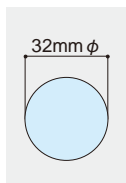
- Carrying case

PRODUCT NAME	MODEL	PKG QTY	MOQ	CODE NO.	C/O
Carbon Fiber RTK Pole / 2.6m	RCP-260	10	10	218828	CN
Case for RCP-260	RCP-260-C	10	10	222165	CN
Carbon Fiber RTK Pole / 2.0m	RCP-200	10	10	223446	CN
Case for RCP-200	RCP-200-C	10	10	223944	CN
Replacement Shoe	RCP-1	1	10	219266	CN

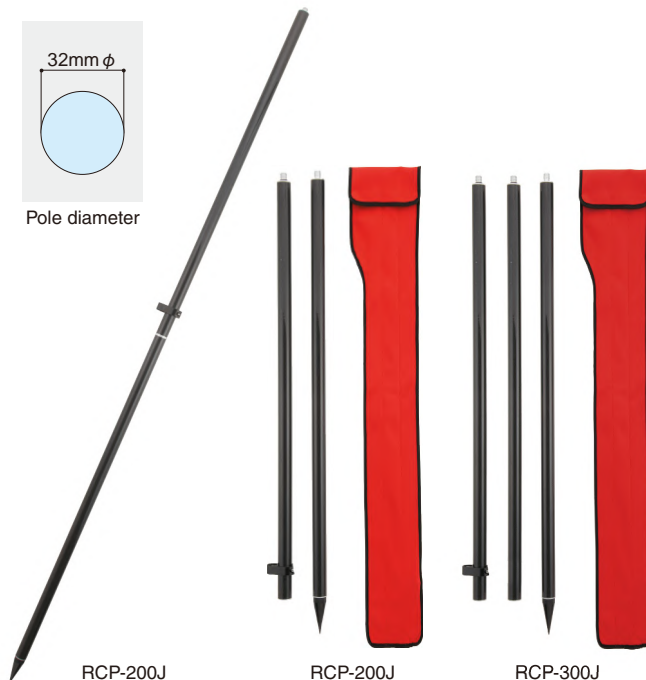
## All Carbon Fiber RTK Pole -Joint type- RCP-200J / 300J

### CARRY FRIENDLY POLE

Joint type RTK pole, carry easily.



Pole diameter



RCP-200J

RCP-200J

RCP-300J

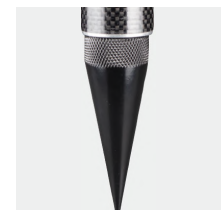
PRODUCT NAME	MODEL	PKG QTY	MOQ	CODE NO.	C/O
Carbon Fiber RTK Pole / 2.0m	RCP-200J	10	10	219346	CN
Carbon Fiber RTK Pole / 3.0m	RCP-300J	10	10	219377	CN
Replacement Shoe	RCP-1	1	10	219266	CN



5/8 inch screw



Built-in circular level  
(20' / 2mm)



Corrosion-resistant shoe

### ✓ CHECK

#### CARRY FRIENDLY POLE

Joint type RTK pole with all carbon fiber material brings you a light and easy carrying. Easy setting and the built-in level brings a relief not to lose it at fields.



#### ► SPECIFICATIONS

Model	RCP-200J	RCP-300J
Full extended	2,000mm	3,000mm
Section	2m / 2sec.	3m / 3sec.
Screw	5/8 inch male	5/8 inch male
Weight	650g	900g

#### ► STANDARD ACCESSORIES

- Carrying Case



Product Link

## NEW Bipod BIP-180 / 148

### THUMB RELEASE

It is easy to get the level by thumb release.



#### ► SPECIFICATIONS

Model	BIP-180	BIP-148
Full extended	1,800mm	1,480mm
Full closed	1,064mm	890mm
Weight	2.15kg	1.85kg
Pole size	21 ~ 38mm φ	21 ~ 38mm φ
Material	Aluminium	Aluminium

#### ► STANDARD ACCESSORIES

- Carrying case

PRODUCT NAME	MODEL	PKG QTY	MOQ	CODE NO.	C/O
Bipod 180cm	BIP-180	4	4	217426	CN
Case for BIP-180	BIP-180-C	10	10	221994	CN
Bipod 148cm	BIP-148	4	4	224452	CN
Case for BIP-148	BIP-148-C	10	10	224635	CN
Replacement Shoe	BIP-1	1	10	219118	CN

## NEW Shoe for RTK Pole Shoe for RTK Pole

### VARIOUS SHOES

Purpose changes, Shoe changes. Choose a suitable shoe for your work.



RCP-1 for replacement  
RCP-2 for soft surfaces  
RCP-FF for slope surfaces

#### ✓ CHECK

##### FLEXIBLE FLAT SHOE

RCP-FF is movable in all directions by ball-and-socket joint, so that you can set up an RTK pole vertically on the slope without sinking even on soft surfaces.



Movable in all directions  
Up to 90 degree at 2 points

#### ► SPECIFICATIONS

Model	RCP-1	RCP-2	RCP-FF
Height	86.5mm	86.5mm	86.5mm
Bottom plate	-	-	80mmφ

PRODUCT NAME	MODEL	PKG QTY	MOQ	CODE NO.	C/O
Standard Shoe (for replacement)	RCP-1	1	10	219266	CN
Flat Pole Shoe	RCP-2	1	10	221509	CN
Flexible Flat Shoe	RCP-FF	1	10	224259	CN



\* The pole is an optional product. Rustproof stainless shoe

#### ✓ CHECK

##### CHOOSE RIGHT SIZE

Choose BIP-148 for RCP-200 because if you use BIP-180 and RCP-200 together, pole clamp part of BIP-180 will be just on the locking part of RCP-200. BIP-180 can be used with RCP-260, RCP-200J and 300J.



#### ✓ CHECK

##### QUICK THUMB RELEASE

It's easy to set up as leveling with one push on quick thumb release.



Product Link

## NEW Case for RTK Pole & Bipod RB-C series

### CARRY WHOLE UNIT

Improving working efficiency by carrying whole unit.



with 2 pockets for circular level and shoe

#### ✓ CHECK

##### CARRY WHOLE UNIT

RB-C series can store the RTK pole and the bipod in assembled condition. It's easy to carry around and set up at field.



#### ► SPECIFICATIONS

Model	RB-C2	RB-C3
Compatibility	RTK pole 2.6m : RCP-260 Bipod : BIP-180	RTK pole 2.0m : RCP-200 Bipod : BIP-148
Size	1,700 × 300mm	1,380 × 300mm

PRODUCT NAME	MODEL	PKG QTY	MOQ	CODE NO.	C/O
RTK Pole & Bipod Case / for 2.6m	RB-C2	10	10	223555	CN
RTK Pole & Bipod Case / for 2.0m	RB-C3	10	10	223946	CN



### Controller Bracket

#### CRL series

#### UNIVERSAL CONTROLLER CLAMP

Adjustable clamp can hold any types of GNSS controllers.



CRL-CLM1



CRL-TP1



CRL-SLC



Built-in compass

#### +1 OPTION

Adapter for Field Controller Bracket

**CRL-HAP1**

Adapter for horizontal use



#### ✓ CHECK



7 grade angle adjustable

#### ✓ CHECK



Width & Depth adjustable  
\*CRL-SLC : width only

#### ► SPECIFICATIONS

Model	CRL-CLM1	CRL-TP1
Device size	Controller / Smartphone	7 inch Tablet
Width	approx. 67 ~ 110mm	approx. 100 ~ 140mm
Depth	up to 55mm	up to 40mm
Pole size	28 ~ 33mmφ	28 ~ 33mmφ
Dimensions	215 × 110 × 45mm	235 × 122 × 45mm
Weight	approx. 340g	approx. 360g

Model	CRL-SLC
Device size	8 inch Tablet
Width	approx. 120 ~ 150mm
Depth	up to 13mm
Pole size	28 ~ 33mmφ
Dimensions	260 × 90 × 45mm
Weight	approx. 340g

#### ► DEVICE EXAMPLES

CRL-CLM1	CRL-TP1	CRL-SLC
• FC-500 / FC-250	• TOUGHBOOK 7 inch	• 8 inch tablet
• SHC-500	• Huawei MediaPad T3 7	• Galaxy Tab Active2
• TOUGHBOOK 4.7 inch	• iPad mini	
• TOUGHBOOK 5 inch	• FC-5000	

PRODUCT NAME	MODEL	PKG QTY	MOQ	CODE NO.	C/O
Universal Controller Bracket	CRL-CLM1	1	10	222839	CN
Field Controller Bracket	CRL-TP1	1	10	222840	CN
Field Controller Slim Bracket with Compass	CRL-SLC	1	10	223556	CN
Adapter for Field Controller Bracket	CRL-HAP1	1	10	222841	CN

### Adapter for DM pin pole

#### COV9

#### FOR DM PIN POLE (9mmφ) USE

Adapt pin pole to clamp holder.



#### ► SPECIFICATIONS

Pole size : 9mmφ  
Size : 34φ × 30mm  
Weight : approx. 30g

PRODUCT NAME	MODEL	PKG QTY	MOQ	CODE NO.	C/O
Adapter for DM Pin Pole (9mm)	COV9	1	10	221878	JP

### NEW Sliding Grip for Pin Pole TAKT

#### TK series

#### FOR DM PIN POLE 6mm or 9mmφ

DM pin pole is slidable through TAKT.



#### ► FEATURES

- Slidable soft grip
- Support legs are removable and angle adjustable
- Stable pole axis

#### ► SPECIFICATIONS

Pole size : 6mmφ(TK6)  
9mmφ(TK9)  
Grip size : 35mmφ × 200mm  
Total size : 35mmφ × 235mm  
Leg length : 150mm  
Weight : approx. 240g

PRODUCT NAME	MODEL	PKG QTY	MOQ	CODE NO.	C/O
Sliding Grip for DM Pin Pole 6mmφ	TK6	20	20	225294	CN
Sliding Grip for DM Pin Pole 9mmφ	TK9	20	20	225295	CN

**NEW** **Holder for Toughbook FZ-N1**  
**TAB-N1S**

**DESIGNED EXCLUSIVELY FOR FZ-N1**  
Holding the device and the pole with one hand.



► **SPECIFICATIONS**

Pole size : 16 ~ 36mmφ  
Size : 165 × 126 × 151mm  
Weight : approx. 335g

One-handed attachment and removal

PRODUCT NAME	MODEL	PKG QTY	MOQ	CODE NO.	C/O
Holder for Toughbook FZ-N1	TAB-N1S	1	10	224431	JP

**NEW** **Holder for Smartphone Tetra Grip**  
**TG-SH1**

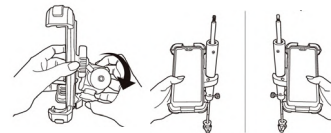
**FIRMLY GRASP A SMARTPHONE**  
Compatible with a wide range of smartphones.



✓ **CHECK**

**CHANGING AXIS ANGLE**

Axis angle can be adjusted by 60° each, it can change the device position.



✓ **CHECK**

**PROTECTION**

Rubber at four corners, and for extra safety, use the switch to lock / unlock.



► **SPECIFICATIONS**

Device size

Height : approx. 125 ~ 174mm  
Width : max. 78mm  
Depth : max. 15mm

Pole size : 16 ~ 36mmφ  
Size : 110 × 160 × 90mm  
Weight : approx. 325g

PRODUCT NAME	MODEL	PKG QTY	MOQ	CODE NO.	C/O
Holder for Smartphone Tetra Grip	TG-SH1	1	10	224999	JP

**Smartphone Bracket for DM Pin Pole 6mm φ**  
**DM-SH6**

**BEST MATCH WITH LAYOUT NAVIGATOR**  
Put the smartphone at your favorite position on DM pole 6mmφ .



► **SPECIFICATIONS**

Device size

Width : 58 ~ 85mm  
Depth : up to 15mm  
Pole size : DM pin pole 6mmφ  
Dimensions : W135 × H160 × D135mm  
Weight : 290g

► **STANDARD ACCESSORIES**

- Silicon tether
- V shape plate (with screw)
- Manual



PRODUCT NAME	MODEL	PKG QTY	MOQ	CODE NO.	C/O
Smartphone Bracket for DM Pin Pole 6mm φ	DM-SH6	1	10	222172	JP
DM Pin Pole 6mmφ(Ref. Page 062)	DMP-6-830A	25	25	225019	JP

**X grip for Smartphone**  
**X-GSM**

**EASY SET UP & STABLE**  
Just 5 seconds to mount the mobile.



► **SPECIFICATIONS**

Device size

Width : approx. 45 ~ 114mm  
Depth : max. 22mm

Pole size : 16 ~ 36mmφ

Size : 145 × 65 × 240mm  
Weight : approx. 350g

\*When using this product at the minimum width(45mm), the height needs to be over 140mm.

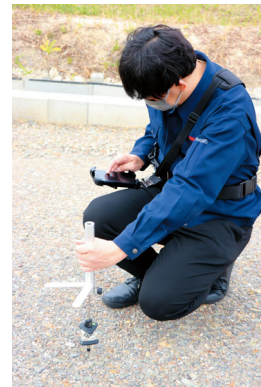
PRODUCT NAME	MODEL	PKG QTY	MOQ	CODE NO.	C/O
X grip set for Smartphone	X-GSM	1	10	225330	US



## Wearable Holder Tetra Fit TF series

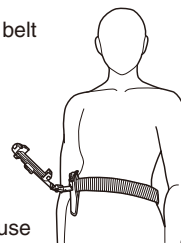
### HANDS FREE

Able to use the device while checking the prism angle.

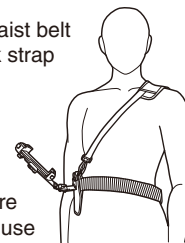


### HOW TO USE

with waist belt  
only



with waist belt  
+ neck strap



### CHECK

#### EASY SETTING



PRODUCT NAME	MODEL	PKG QTY	MOQ	CODE NO.	C/O
Tetra Fit for Smartphone	TF-SH1	1	10	225020	JP
Tetra Fit for FZ-N1	TF-N1	1	10	225021	JP
Tetra Fit for Data Collector	TF-C56	1	10	225296	JP
Replacement Neck Strap	TF-NECK	1	10	225056	JP
Replacement Waist Belt	TF-WAIST	1	10	225057	JP

### SPECIFICATIONS

Model	TF-SH1	TF-N1	TF-C56
Device size	4.7 ~ 6.8 inch		
Examples	H 125 ~ 174mm W max. 78mm D max. 15mm	Panasonic TOUGHBOOK FZ-N1	Topcon FC-500 / FC-600 Sokkia SHC500 / SHC600
Dimensions	125 x 90 x 290mm	125 x 90 x 320mm	335 x 120 x 85mm
Weight (holder)	390g	330g	360g
Weight (belt)	260g	260g	260g

### STANDARD ACCESSORIES

- Waist belt (70 ~ 110cm)
- Neck strap (75 ~ 129cm)



Product Link

## Laptop Holder RAM-234-3

### ACCOMMODATE TABLET AND LAPTOP

Compatible with TOUGHPAD that have optional tall corner guards.



### OPTION

Attach to a Tripod Head

Double Socket Arm  
with Bases  
**RAM-101U-B**



Mount Base  
**MB**

### SPECIFICATIONS (RAM-234-3)

Device size	: 10 to 16 inch Laptop / Tablet
Height	: approx. over 130mm
Width	: approx. 254 ~ 406mm
Depth	: approx. 13 ~ 44mm

\* Attach the Laptop Holder to a tripod leg / pole is not recommended.

PRODUCT NAME	MODEL	PKG QTY	MOQ	CODE NO.	C/O
Laptop Holder	RAM-234-3	1	10	222226	US
Double Socket Arm with Base (1.5" ball)	RAM-101U-B	1	10	222230	US
Mount Base for Tripod Head Use	MB	1	10	222231	US



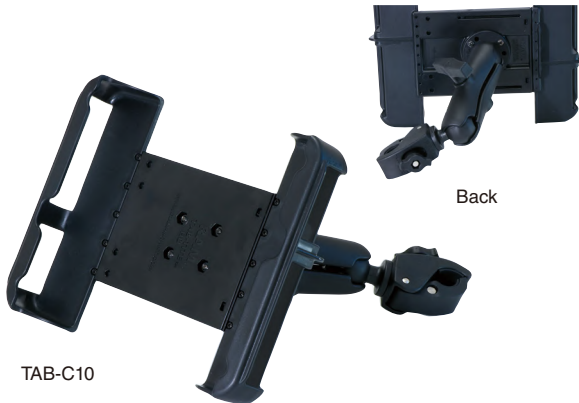


## Tablet Holder Unit Tough Holder

### TAB series

**GOES WELL WITH Panasonic TOUGHBOOK**

Dedicated holder for tablets with 8 or 10 inch display.



TAB-C10



TAB-7

PRODUCT NAME	MODEL	PKG QTY	MOQ	CODE NO.	C/O
Tablet Holder Unit / 10 inch	TAB-C10	1	10	225314	US
Tablet Holder Unit / 8 inch	TAB-7	1	10	222086	US



Easy to attach and detach



\*TAB-C10 only

Soft spacers prevent wobbling of thin devices

### ✓ CHECK

#### DC CONNECTION HOLE

The holder allows you to charge your device without obstruction.



#### ► SPECIFICATIONS

Model	TAB-C10	TAB-7
Device size	10 inch Tablet	7 inch / 8 inch Tablet
Examples	<ul style="list-style-type: none"> <li>• TOUGHBOOK FZ-G1*</li> <li>• TOUGHBOOK FZ-G2</li> <li>• TOUGHBOOK FZ-A3</li> </ul>	<ul style="list-style-type: none"> <li>• TOUGHBOOK FZ-M1</li> <li>• TOUGHBOOK FZ-S1</li> </ul>
Pole size	16 ~ 36mmφ	16 ~ 36mmφ
Dimensions	280 × 210 × 300mm	176 × 150 × 240mm
Weight	approx. 880g	approx. 520g

\*Except for a model which attaches corner protector.

#### ► STANDARD ACCESSORIES

- Soft spacer × 4 (TAB-C10)

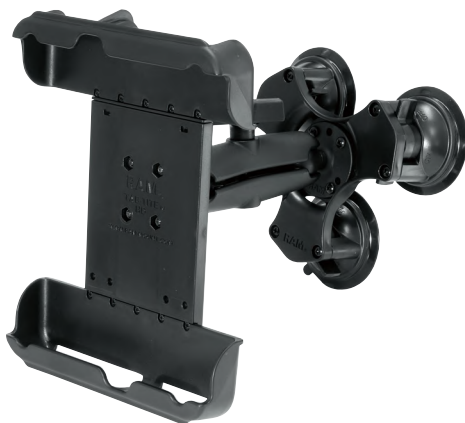


## Tablet Holder Set with Suction Cup Tough Spider

### TS-C10

**DURABLE SUCK AGAINST STRONG VIBRATION**

Suck the cockpit windshield of heavy machinery.



Easy to attach



Soft spacers



DC connection hole

### ✓ CHECK

#### STRONG HOLDING & STABILITY

Fall prevention design against vibration of heavy machinery.

#### LEVER LOCK SUCKER

Easy installation and release by lever lock.  
Powerful suction cup adsorb windshields strongly.



#### ► SPECIFICATIONS

Device size	: 10 inch Tablet
Examples	<ul style="list-style-type: none"> <li>• TOUGHBOOK FZ-G1*</li> <li>• TOUGHBOOK FZ-G2</li> <li>• TOUGHBOOK FZ-A3</li> </ul>

Dimensions	: 280 × 210 × 270mm
Weight	: approx. 1.12kg

\*Except for a model which attaches corner protector.

#### ► STANDARD ACCESSORIES

- Soft spacer × 4



Product Link

PRODUCT NAME	MODEL	PKG QTY	MOQ	CODE NO.	C/O
Tablet Holder Set with Suction Cup / 10 inch	TS-C10	1	10	225315	US

## GNSS Receiver Case

### M-GPC

#### EASY TO BRING TO FIELD

M-GPC can bring whole units for GNSS accessories at one time.



Backpack



Hand carry



Sling



Removable partition to get your favorite room

#### CHECK

#### EASY TO BRING TO FIELD

Designed for RTK surveying; M-GPC has rooms for antenna, controller, adapters and tribrach.

Easy to arrange room inside of case and able to make your own arrangements.

#### SPECIFICATIONS

Dimensions : 450(W) × 235(H) × 300(D)mm  
Internal dimensions : 440(W) × 180(H) × 250(D)mm  
Carrying belt : 1,100 ~ 1,650mm  
Weight : 2.00kg



Product Link

## Tribrach with Optical Plummet

### MY011BO / YO

#### CLEAR & EASY ADJUSTMENT

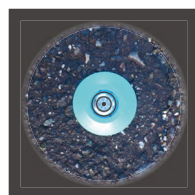
Available to use for GNSS instruments



MY011BO



MY011YO



Bright field of view  
(Optical plummet)

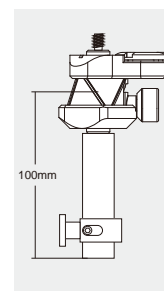
#### SPECIFICATIONS

Material : Aluminium  
Plummet : Optical  
Circular level : 8' / 2mm  
Color : Yellow / Black  
Locking screw : 5/8 inch female

PRODUCT NAME	MODEL	PKG QTY	MOQ	CODE NO.	C/O
Tribrach with Optical Plummet / Black	MY011BO	1	10	240003	CN
Tribrach with Optical Plummet / Yellow	MY011YO	1	10	222271	CN

## Spigot type Pole Adapter

### LSP100



#### SPECIFICATIONS

Dimensions: 25 × 27 × 135mm  
Weight : 74g

PRODUCT NAME	MODEL	PKG QTY	MOQ	CODE NO.	C/O
Spigot type Pole Adapter	LSP100	1	10	222281	CN

## Mini Prism Adapter

### MAG50



MAG50



MAG50 + Z-220  
+ Instrument



MAG50 +  
DMP-M6

#### SPECIFICATIONS

Pole length : 60mm  
Pole diameter : 9mm φ  
Screw : 5/8 inch female  
Use with tribrach : Yes

PRODUCT NAME	MODEL	PKG QTY	MOQ	CODE NO.	C/O
Mini Prism Adapter	MAG50	1	10	221851	CN
Shoe / female	DMP-M6	1	10	219524	JP

## Tribrach & Height Adapter

### MG030 series

#### HIGH VISIBILITY

MG030 series has high brightness & center circle of view from optical plummet.



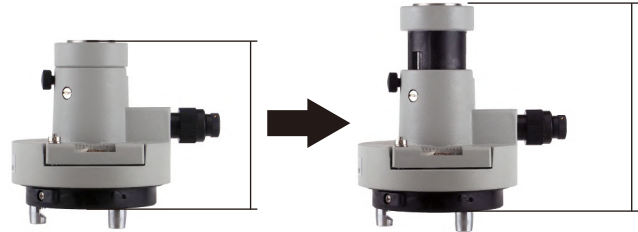
MG030S



Scale of height adapter



MG030G



Full closed : 98mm

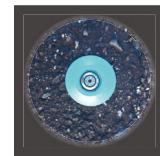
Height adjustable : 23mm

Full extended : 121mm

#### ✓ CHECK

##### HIGH VISIBILITY

The view from optical plummet is bright, and there is a center circle. It's easy to aim measuring point by brightness, and set measuring at measuring point exactly.



PRODUCT NAME	MODEL	PKG QTY	MOQ	CODE NO.	C/O
Tribrach & Height Adapter / Yellow	MG030S	6	6	219324	CN
Tribrach & Height Adapter / Gray	MG030G	6	6	217907	CN
Adapter for Tribrach	ADP-5/8U	1	10	221340	CN

#### ► SPECIFICATIONS

Model	MG030S	MG030G
Adjustable range	23mm	23mm
Circular level	8' / 2mm	8' / 2mm
Tubular level	60" / 2mm	60" / 2mm
Optical plummet	3.6X	3.6X

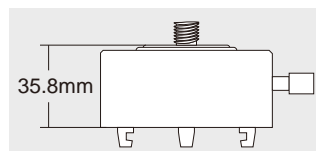


Product Link

## Tribrach Adapter with Removable Center TAR

#### SIMPLE TO SET UP

Easy to detach GNSS receiver while GNSS surveying.



#### ► FEATURES

- Easy to detach receiver from tribrach
- Removable center
- Side screw locks removable center

#### ► SPECIFICATIONS

Dimensions : approx. 97 × 79 × 63 mm  
Weight : approx. 565 g

PRODUCT NAME	MODEL	PKG QTY	MOQ	CODE NO.	C/O
Tribrach Adapter	TAR	1	10	240041	CN

## Adapter for GNSS QDA / SPA100 / SPA200

#### EXTRA ACCURACY

Receiving more GNSS signal by adding 100mm adapter.



QDA

SPA100

SPA200

#### ✓ CHECK

##### QUICK THUMB RELEASE SYSTEM (QDA)

It's quick and easy to detach by thumb release system.



#### ► SPECIFICATIONS

Model	QDA	SPA100	SPA200
Screw (top)	5/8 inch male	5/8 inch male	5/8 inch male
Screw (bottom)	5/8 inch female	5/8 inch female	5/8 inch female
Dimensions	approx. 110 × 35 × 26 mm	100 × 25 mmφ	200 × 25 mmφ
Weight	approx. 80 g	approx. 110 g	approx. 256g

PRODUCT NAME	MODEL	PKG QTY	MOQ	CODE NO.	C/O
Quick Adapter	QDA	1	10	240026	CN
Spacer / 100mm	SPA100	1	10	240042	CN
Spacer / 200mm	SPA200	1	10	224450	CN



## GNSS Receiver Pole

### SKY LIFTER 3

#### THE LONGEST POLE

Extendable up to 15m with additional poles.



SKY-LF



Parts (5m)

#### ► SPECIFICATIONS

- Antenna height : 2 ~ 15m (1m joint type)  
\*up to 15m if using optional poles
- Body weight : 10kg
- Pole weight : 870g / 1pc
- Pole material : Aluminium

#### ► ATTACHED ITEMS (SKY-LF)

- Main body
- Centripetal disc
- Elevating handle
- Antenna adapter
- Bag for main body
- 5m pole (1m × 5)
- Adapter for measuring point
- Antenna pole set
- Anchor wire × 4
- Branch line adapter
- Branch line wire set × 4
- Turnbuckle × 4
- Winder for branch line

#### ► REMARKS

- All include package (SKY-LF)
- Additional Poles (1m × 5pcs) (SKY-PL)

### ✓ CHECK

#### THE LONGEST POLE

Extendable up to 15m with additional poles.  
Easy to extend by handling systems and no need to set GNSS from high-position.  
Sustain wires comes with and bring much stability.

PRODUCT NAME	MODEL	PKG QTY	MOQ	CODE NO.	C/O
Sky Lifter 3	SKY-LF	1	1	102535	JP
Additional Poles	SKY-PL	1	1	102536	JP

## GNSS Receiver Pole

### MG SATELLITE POLE

#### MAKING EXTRA HEIGHT

Making extra height by easy setting with jointable pole.



\* Full extended : 2m

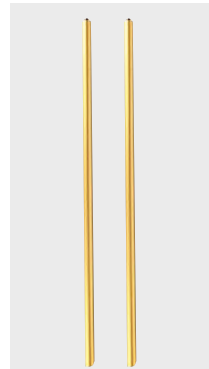
#### ► SET CONTENTS (GPS-P02)



Attachment  
5/8 inch  
(MY-AT)



Tip adapter  
(MY-ADP)



Aluminium pole  
40mmφ  
(MY-PL)

### ✓ CHECK

#### MAKING EXTRA HEIGHT

Only need tribrach and tripod to set up GNSS antenna at high position, up to 2m. Yellow color body is easy to find from far away.  
Recommended height is up to 2m by pole joint.

PRODUCT NAME	MODEL	PKG QTY	MOQ	CODE NO.	C/O
MG Satellite Pole Set	GPS-P02	1	10	102473	JP
Tip Adapter	MY-ADP	1	10	102527	JP
1m Pole × 2pcs with Carrying Case	MY-PL	1	10	102528	JP
Attachment	MY-AT	1	10	102529	JP
1m Pole × 1pc	MY-PL1	1	10	218591	JP
Carrying Case for Pole	MY-PLC	1	10	218592	JP